



Uniting Europe's Energy, Today

CROSS-BORDER SUSTAINABLE RENEWABLE ENERGY ACCELERATION IN UKRAINE - MAPPING SYNERGY RENEWABLE ENERGY ACCELERATION AREAS BETWEEN UKRAINE, EU MEMBER STATES, AND MOLDOVA

KEY PROJECT DELIVERABLES AND OPTIONS FORWARD

GIS methodology and tools

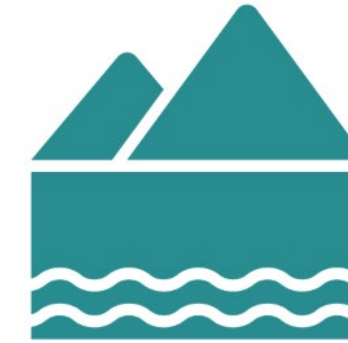
by Anastasiia Oleshchenko & Viktor Putrenko

2025

Open-source GIS software

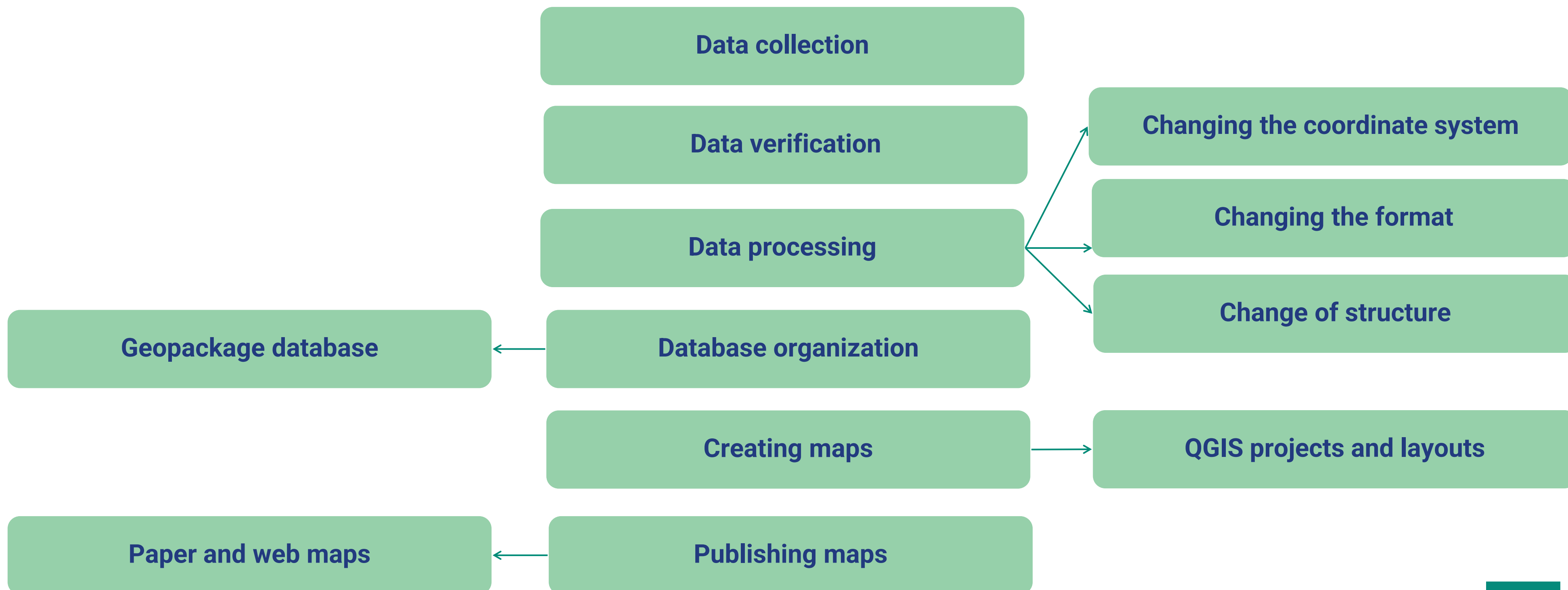


Data Source for GIS purpose



Data source	Type	Format
Openstreetmap	Vector	Shape-file
The official web-site of Ramsar Convention	Vector	Shape-file
Open Data Portal	Vector	Shape-file
<i>Global Biodiversity Information Facility</i>	Vector	Table
BirdLife International	Vector	Shape-file
Shuttle Radar Topography Mission		Geotiff
Global estimates of land use/land cover (LULC), derived from ESA Sentinel-2 imagery at 10m resolution	Raster	Geotiff
Global Solar Atlas	Raster	Geotiff
Global Wind Atlas	Raster	Geotiff

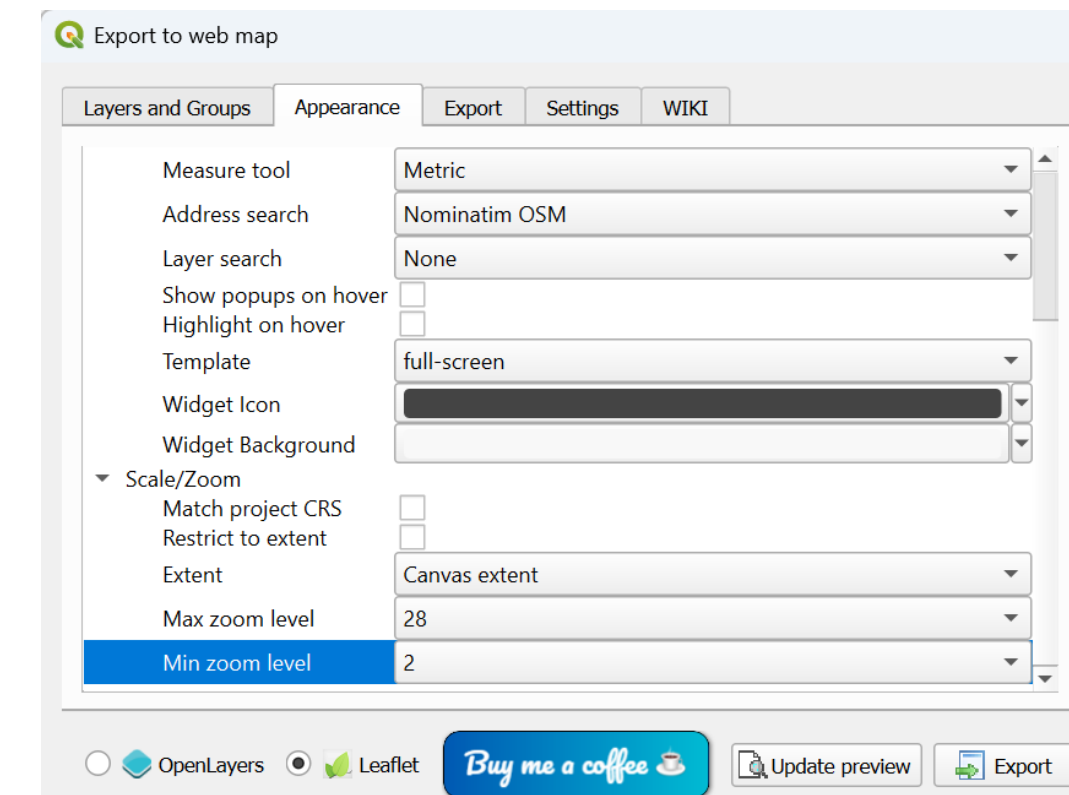
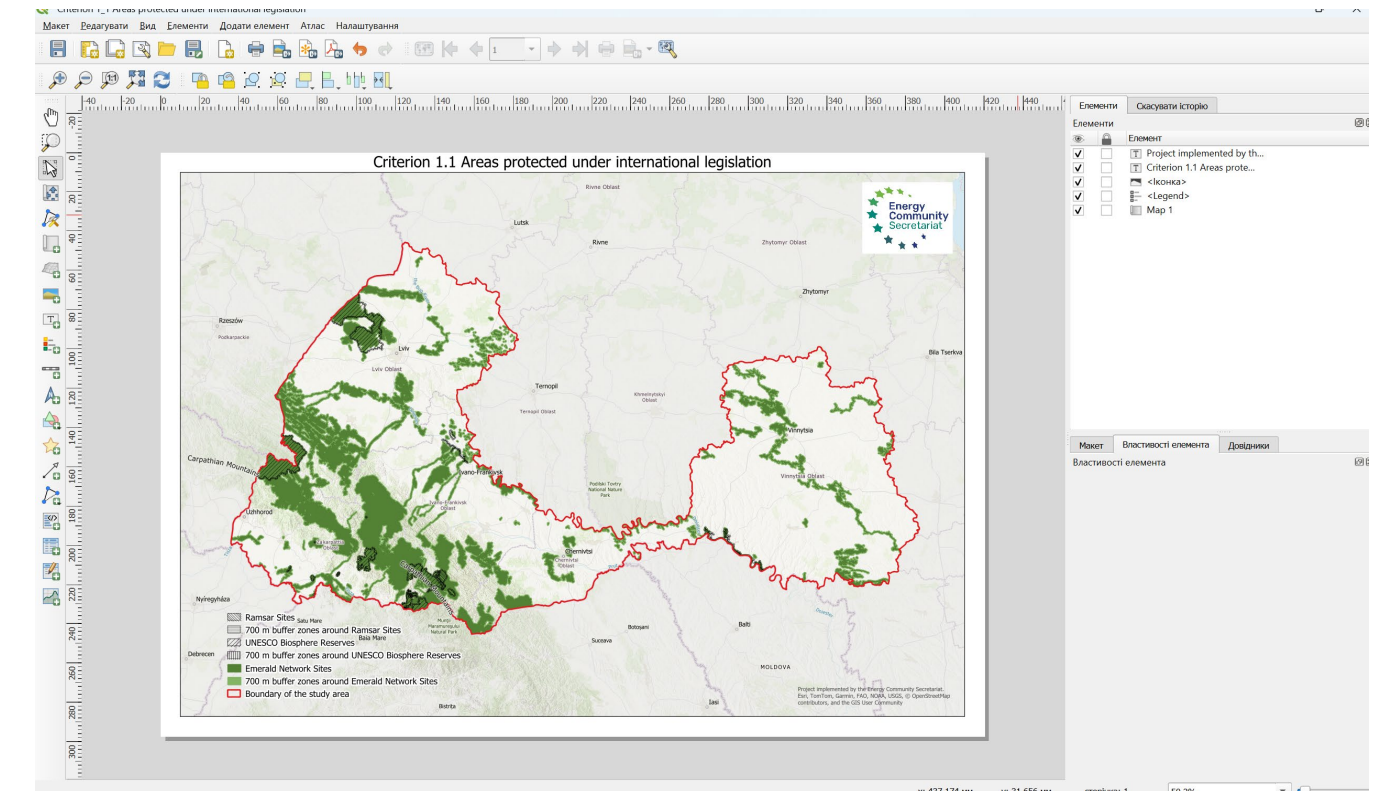
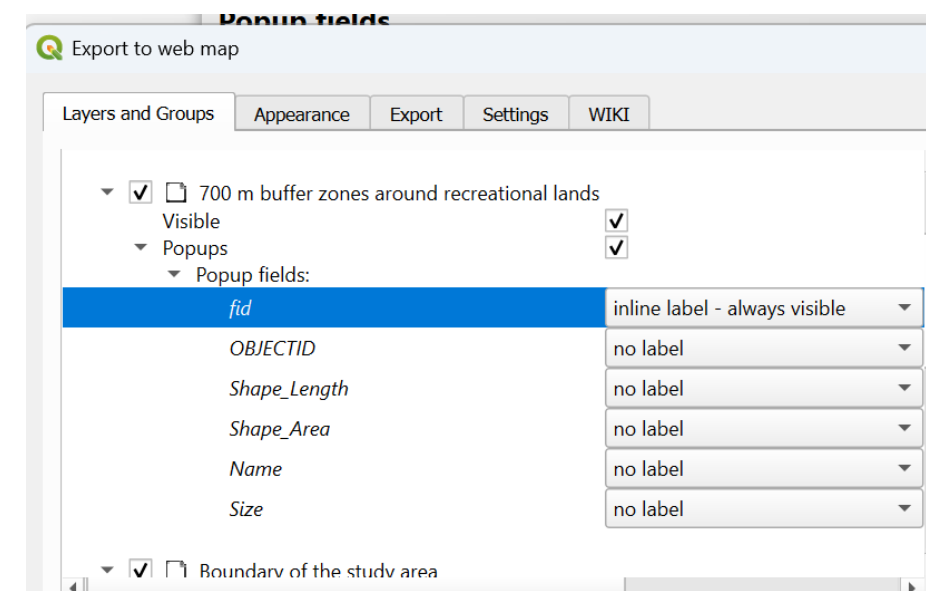
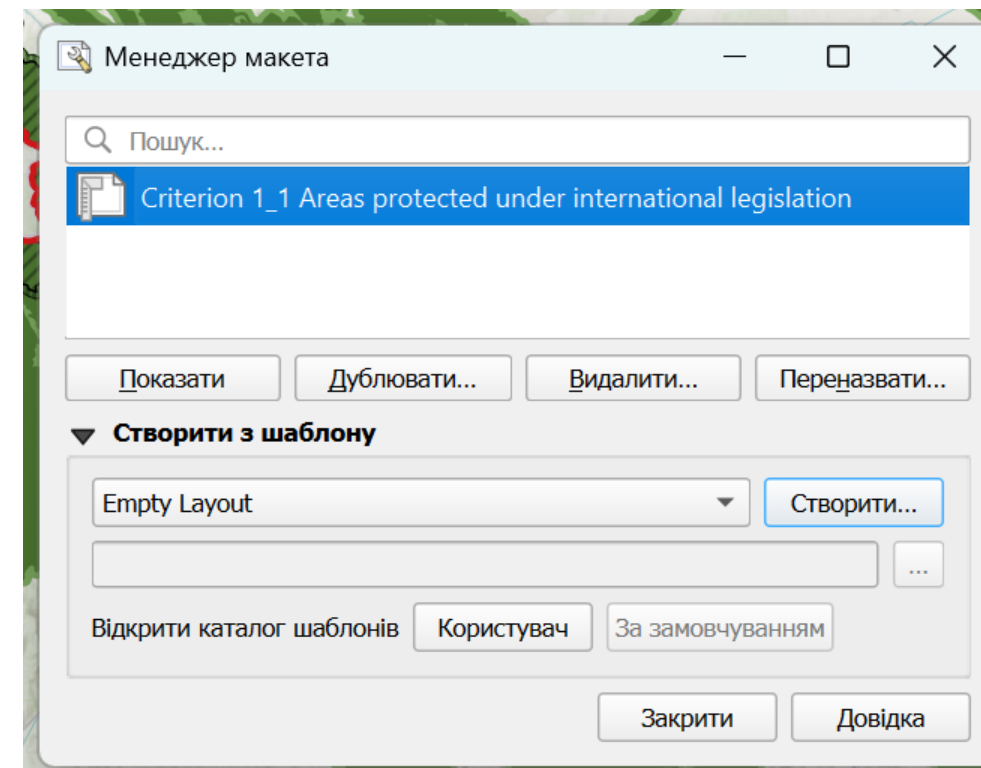
METHODOLOGY OF GIS PROCESSING



MAP PUBLICATION

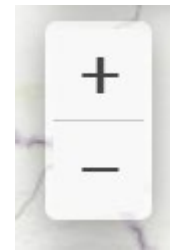
Paper publication
Jpg, tiff, PDF

Web publication
qgis2web plugin



WEB TOOLS

Zooming in and out on the map



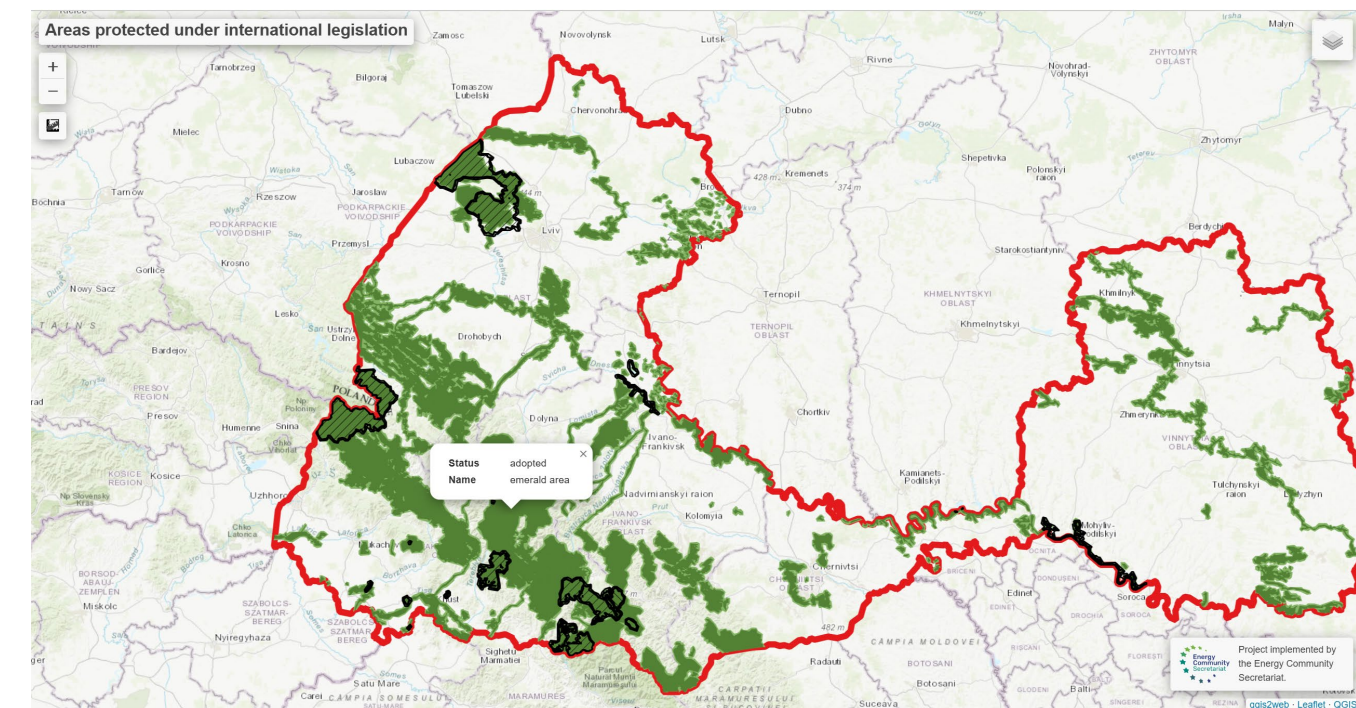
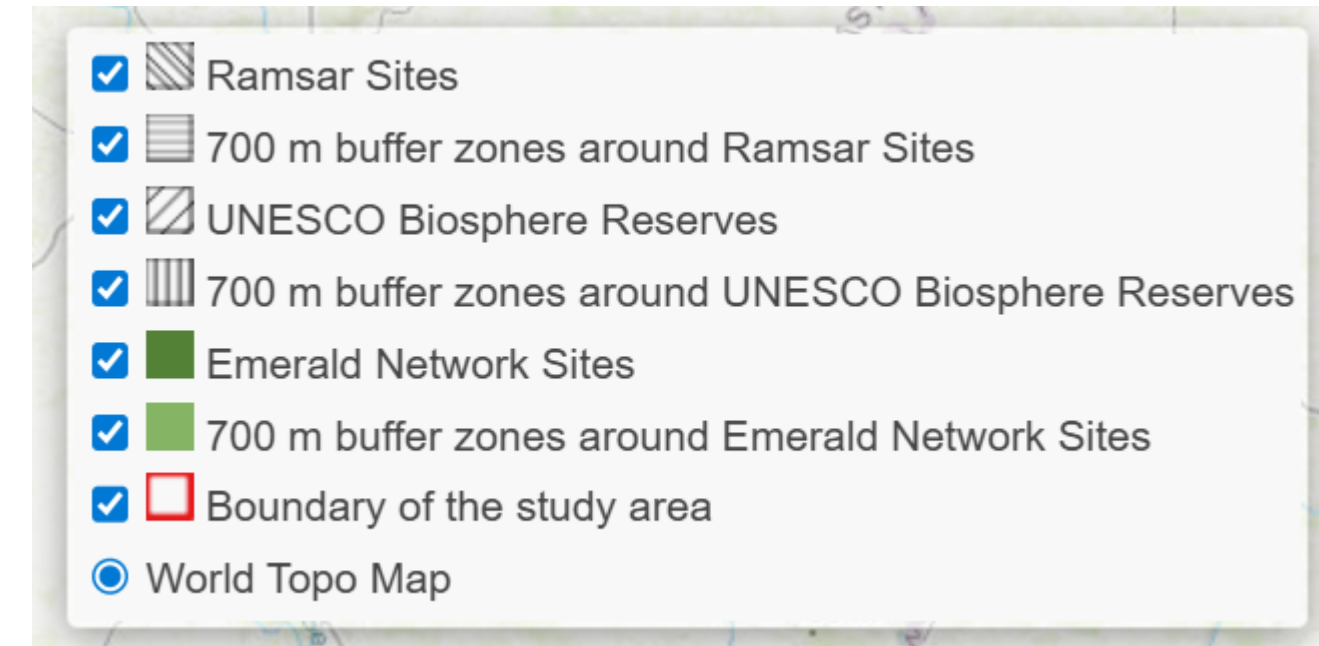
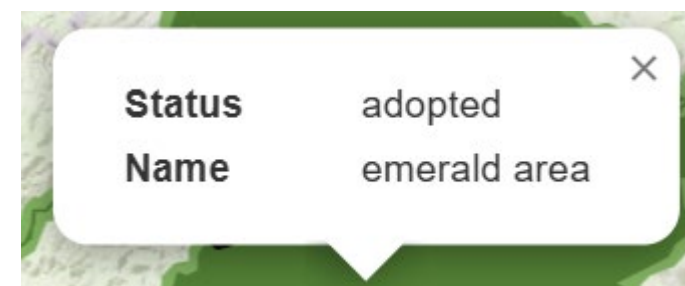
Layers and legend



Measure distance



Pop-up windows



FURTHER DATA ANALYSIS CAPABILITIES

- ❑ Selection and analysis of sites with specific conditions and properties
- ❑ Filtering objects by different attributes
- ❑ Calculation of the highest economic return
- ❑ Assessment of additional territorial factors using satellite images
- ❑ Automation of models for selecting optimal sites



THANK YOU FOR YOUR KIND ATTENTION!



Energy Community Secretariat
Am Hof 4, Level 5, 1010 Vienna, Austria

energy-community.org

