

ODYSSEE-MURE Fit 4-55
Monitoring the Energy Efficiency Pillar for Climate Neutrality,
November 25th 2024

Sectoral policies and indicators in Moldova for buildings

Ecaterina Stețenco, National Center for Sustainable Energy

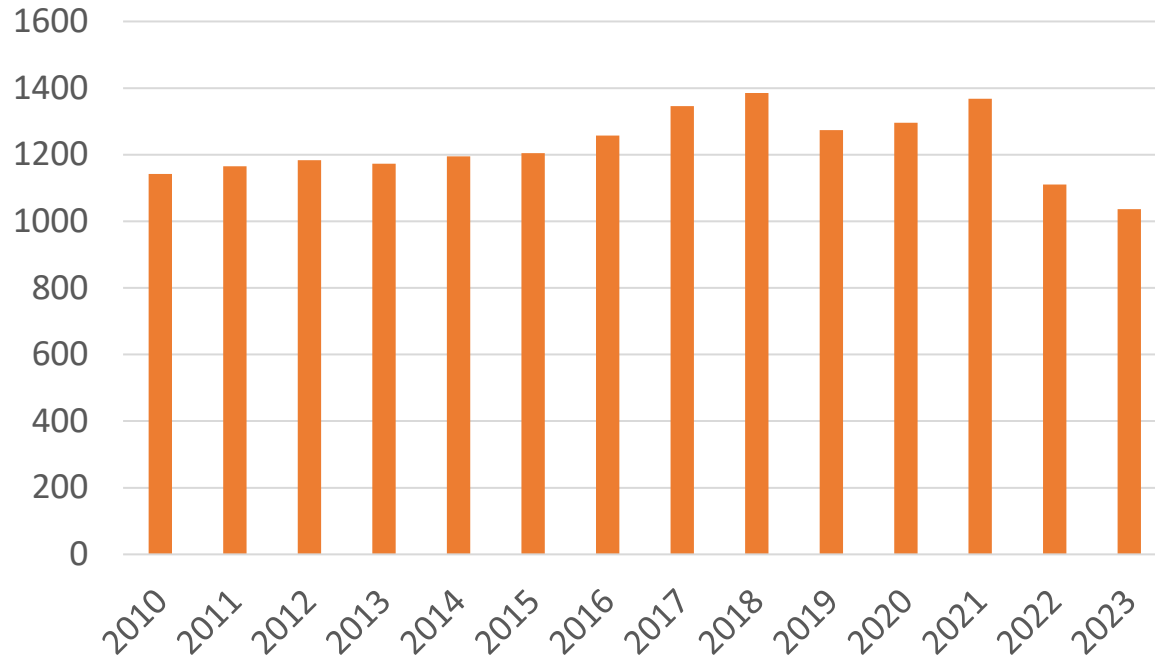
1. General information
2. Consumption trends in the residential sector
3. Energy consumption per dwelling
4. Consumption of household by end-use
5. Data availability
6. National policies for the household sector
7. Difficulties of the measures quantification

- Moldova is a country bordering **Romania** and **Ukraine**, with a **population** of **2.423.287** people as of January 1, 2024.
- **Transnistria**, a disputed territory, is the main **epicenter of energy production**.
- Moldova is heavily **reliant on energy imports**, particularly fossil fuels like **natural gas, oil, and coal**.
- Moldova **does not have its own substantial energy reserves**, and **local production** of oil and natural gas is **limited**.
- **Energy diversification** efforts are **ongoing**, but are **blocked** by **infrastructure limitations** and **geopolitical challenges**.



Consumption trends in the residential sector

Total consumption, ktoe

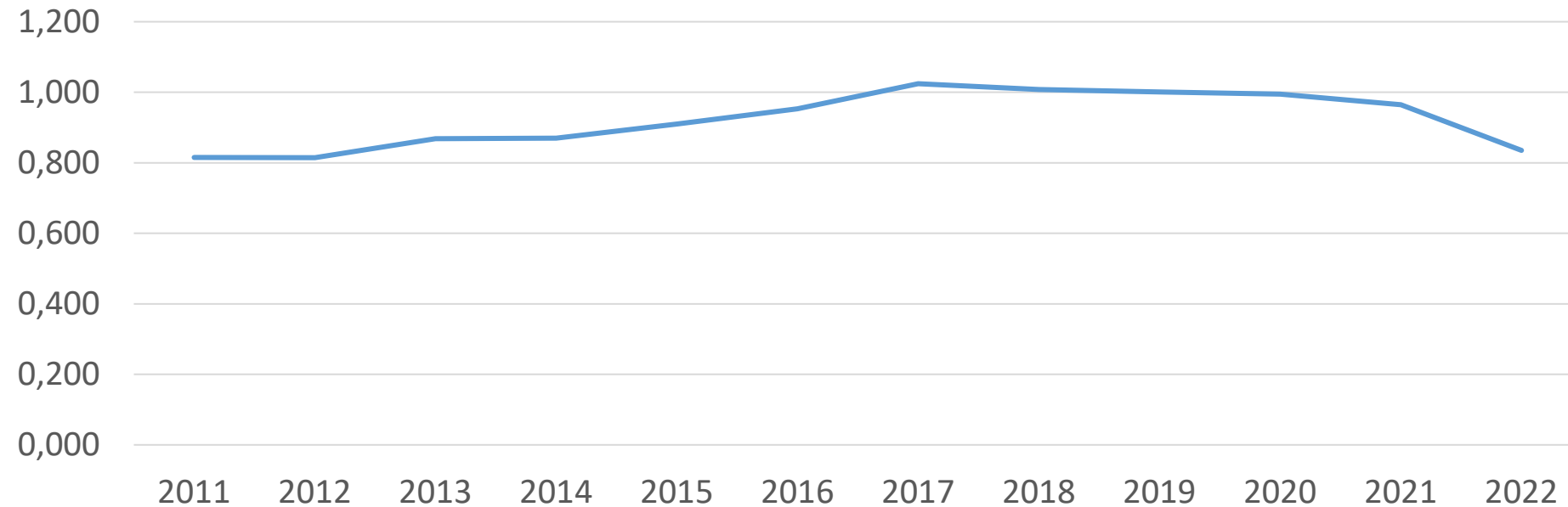


Electricity consumption, ktoe



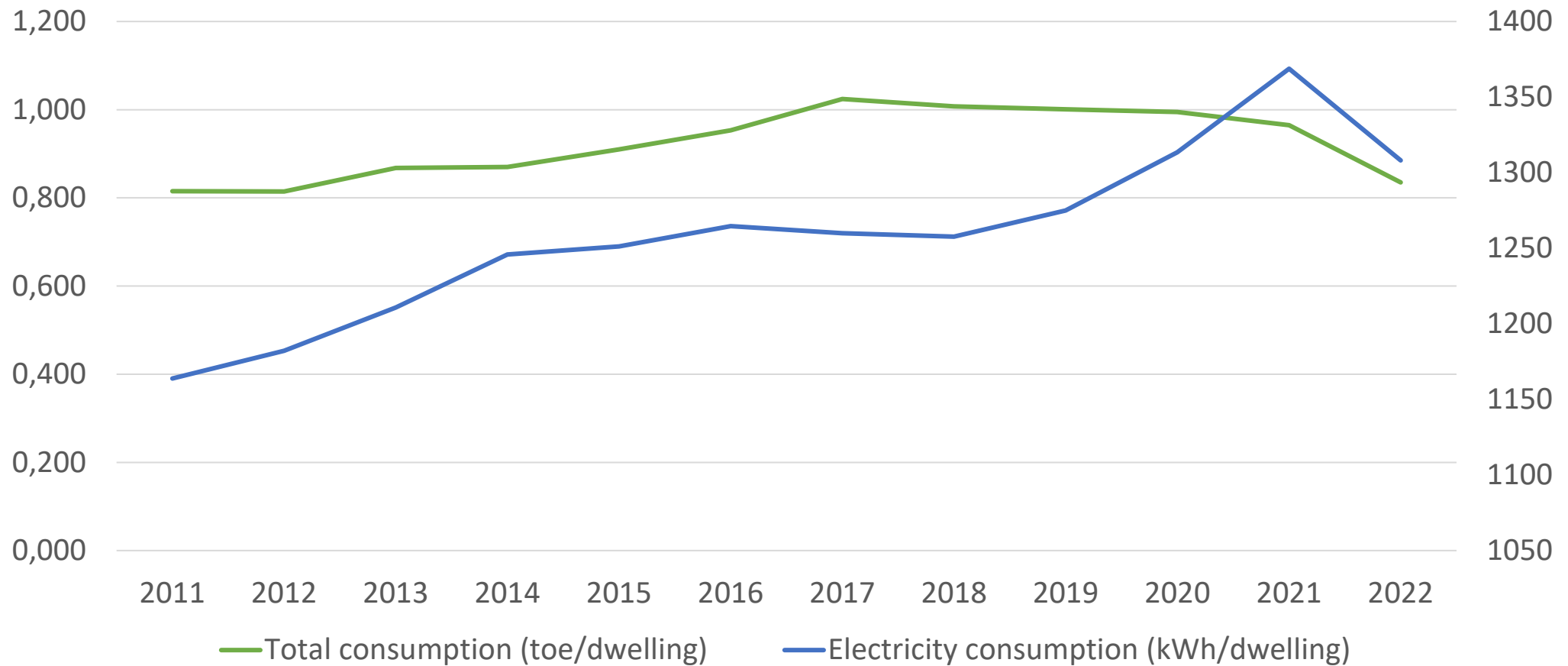
- **Total energy consumption** reached its **highest point in 2018**, with another peak recorded in **2021**.
- There was a **significant decline** in total consumption in the **residential sector** in **2022-2023**.
- **Total energy consumption in 2023 decreased by 24.63%** compared to 2021, while **electricity consumption** also **decreased by 8.9%** during the same period.

Energy consumption per dwelling

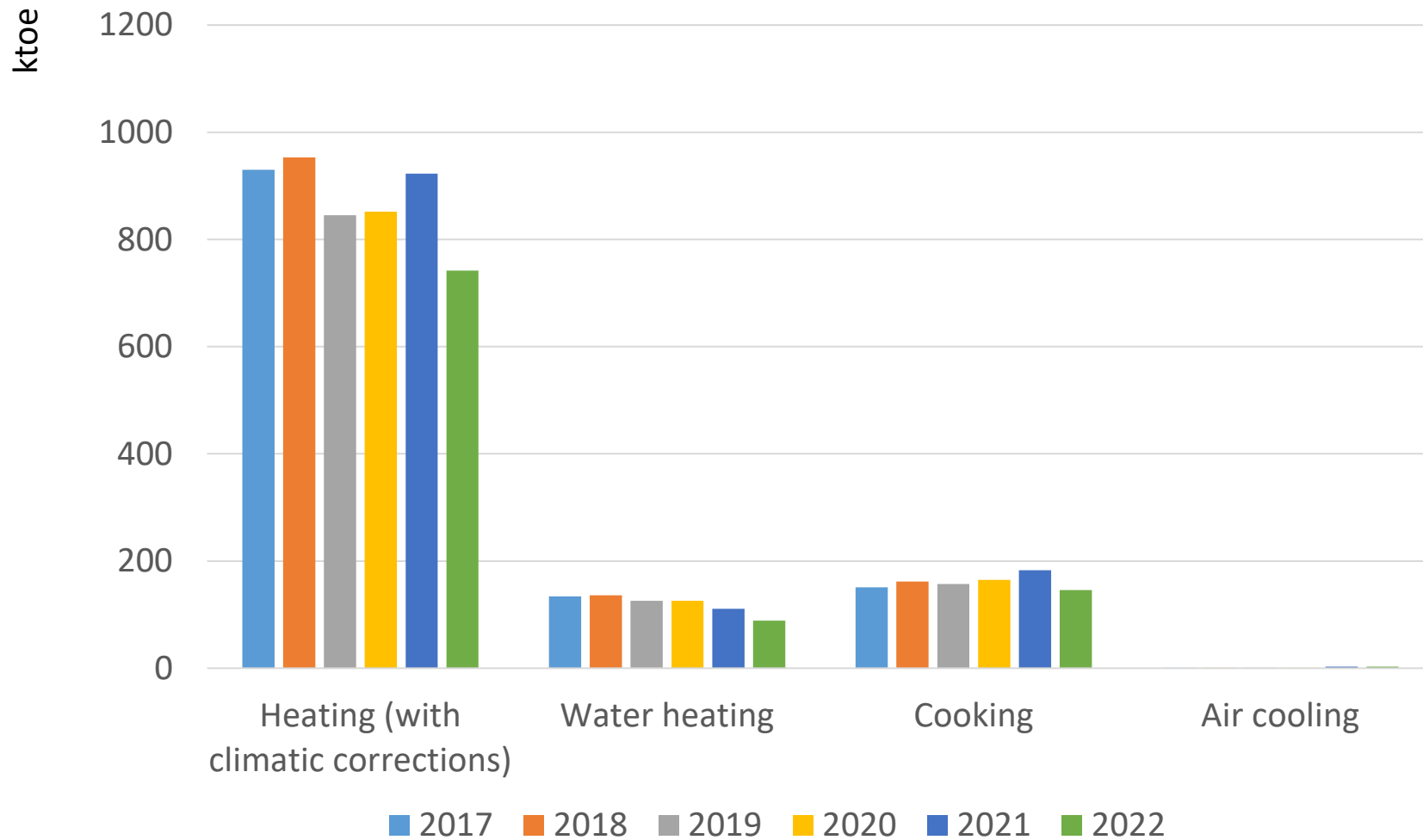


- In **2022**, the **average household income declined by 6%** in real terms, with poorer households being disproportionately affected, as their **consumption fell by 10%**.
- Energy affordability has been a persistent challenge, with **30% of Moldovans unable to adequately heat their homes in 2021 - four times the EU average**.
- Energy expenses place a significant **burden on poorer and rural households**, with half of the **lowest-income group struggling**, compared to just **10%** of the wealthiest.

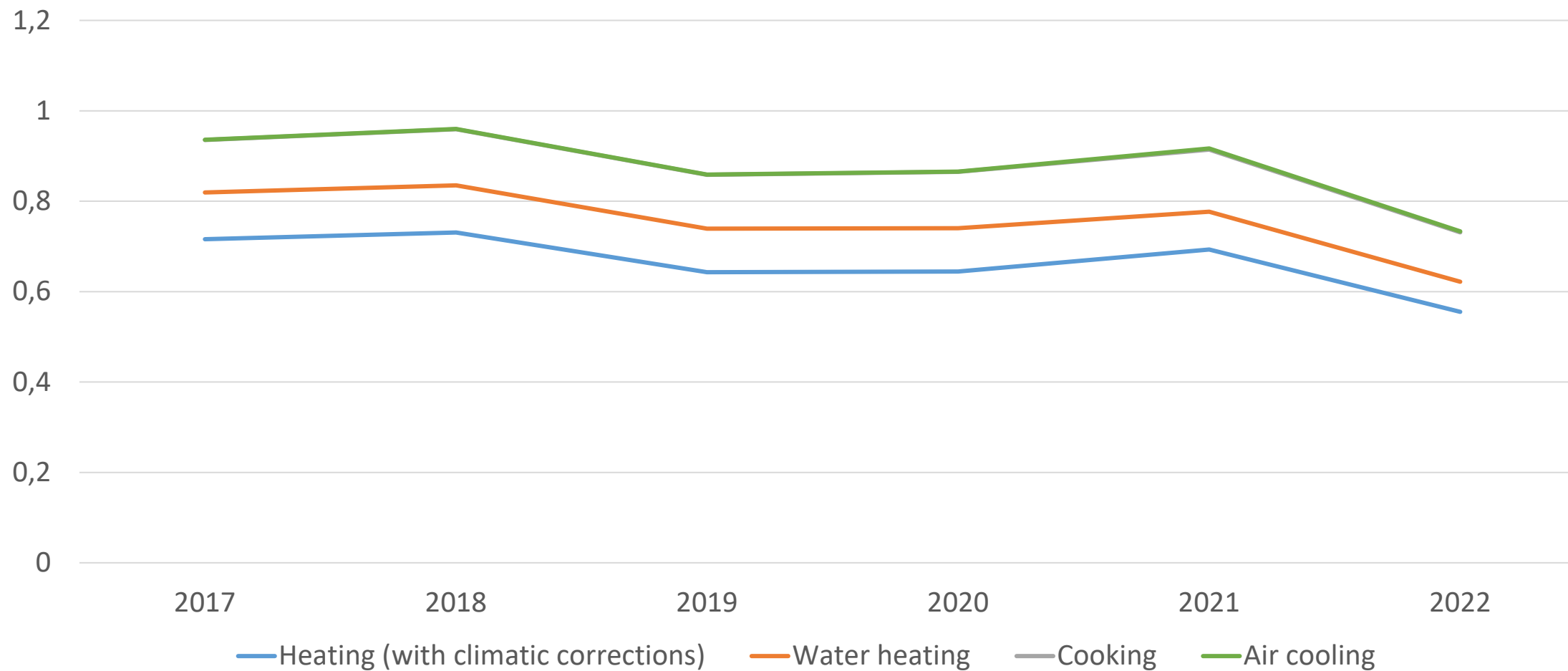
Specific consumption per dwelling



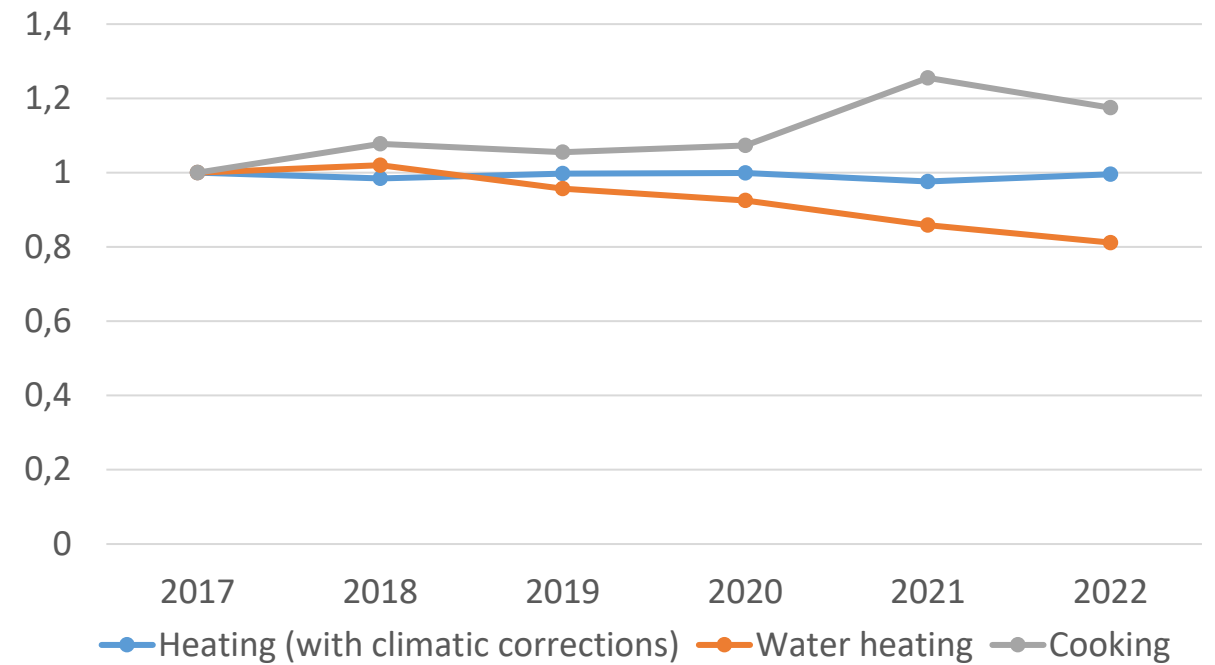
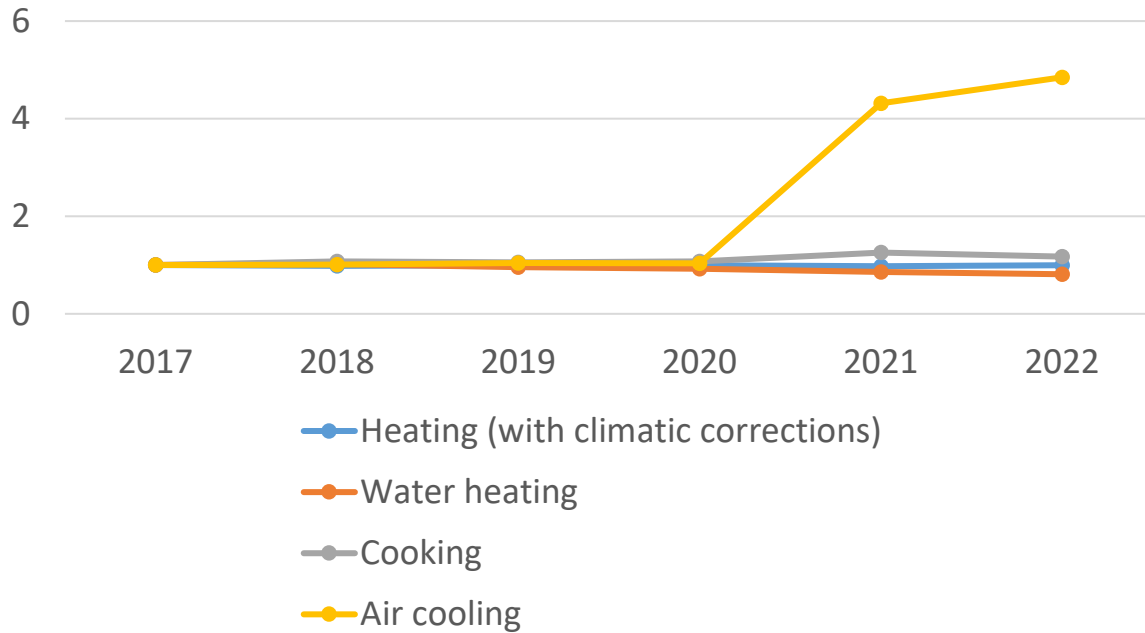
Consumption of household by end-use



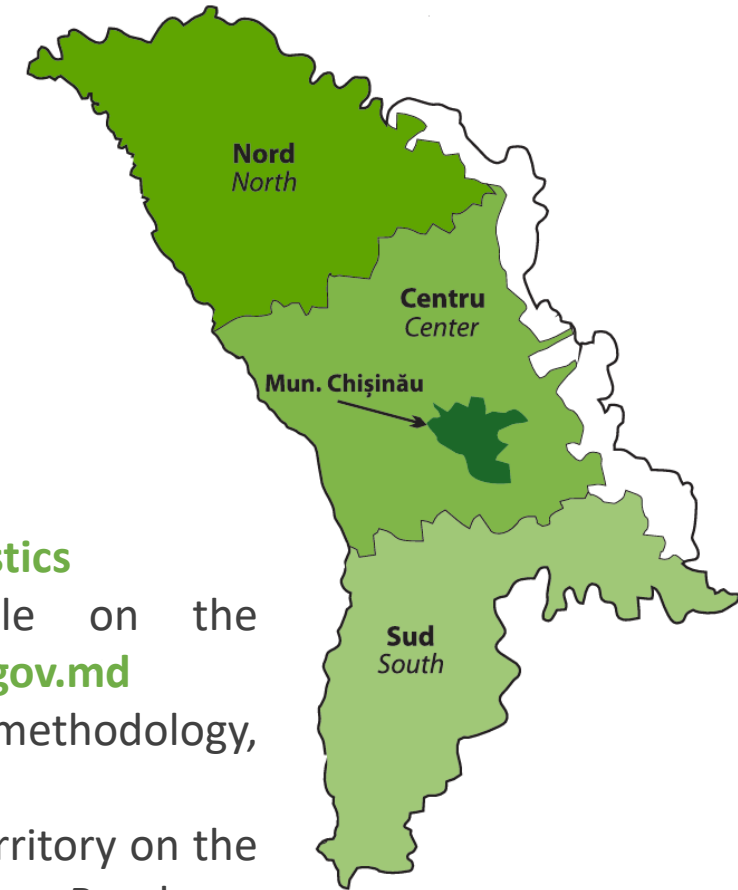
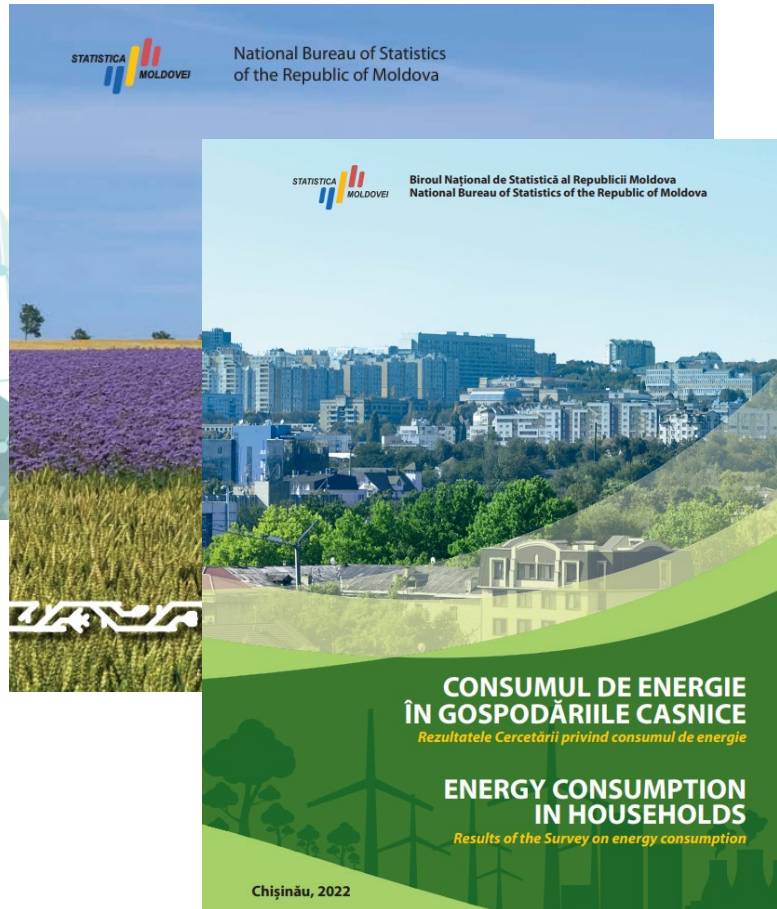
Specific consumption by main end-use



Specific consumption by main end-use and ODEX



Data availability



- **Source:** National Bureau of Statistics
- **Availability:** Publicly accessible on the government website – statistica.gov.md
- **Documentation:** includes methodology, sample size, and annual updates
- **Limitations:** data excludes the territory on the left side of the river Nistru and mun. Bender

National policies for the household sector

- In the period from **2022 to 2024**, Moldova's household policy prioritized several **key areas to address economic challenges** and **provide effective support** to its citizens.
- The national policy **focuses on** tackling key challenges related to **energy efficiency, housing quality, and environmental sustainability**.
- The overarching goal is **to enhance** living standards **while fostering resilience** to economic and environmental pressure.



The Energy Vulnerability Reduction Fund



The Household Appliances Voucher Program



Financial program 'Energy Efficiency Fund in the residential sector of the Republic of Moldova'

Data Availability and Quality

- **Lack of granular data:** Detailed data on the total number of households, the stock of dwellings by heating fuel, the specific consumption of electrical appliances, households consumption by end-use, the specific consumption of dwellings are partially limited or unavailable.
- **Inconsistency in data sources:** The discrepancy in the inclusion of Transnistria between national statistics, Eurostat, and ENERDATA leads to inconsistencies and highlights the challenge of aligning energy and economic data.
- **Data with delayed updates:** Some datasets experience delayed updates due to a lack of employees at NBS, making it difficult to accurately reflect current trends or impacts.
- **Target group challenges:** It may be challenging to apply a standardized approach across such diverse household types. Misunderstanding the specifics of the market can lead to miscalculations of energy savings, cost-efficiency, and return on investment.
- **External factors:** Weather conditions, economic changes, and political instability can affect the estimated performance indicators and forecasted energy savings during the implementation of the measures.



Thank you for your attention!

National Center for Sustainable Energy
www.cned.gov.md

Ecaterina Stetenco
ecaterina.stetenco@cned.gov.md

