

## *14<sup>th</sup> Renewable Energy Coordination Group meeting*

### **Project “Promotion of renewable energy and energy efficiency in Serbia”**

#### **Solar Calculator**

Aleksandar Popovic, project manager

*29/11/2022, Vienna, Zoom*



**Solarni sistemi**  
Sve na jednom mestu

Solarni Kalkulator



Skeniraj kod

Logo of German-Serbian Partnership (немачка сарадња) with German and Serbian flags

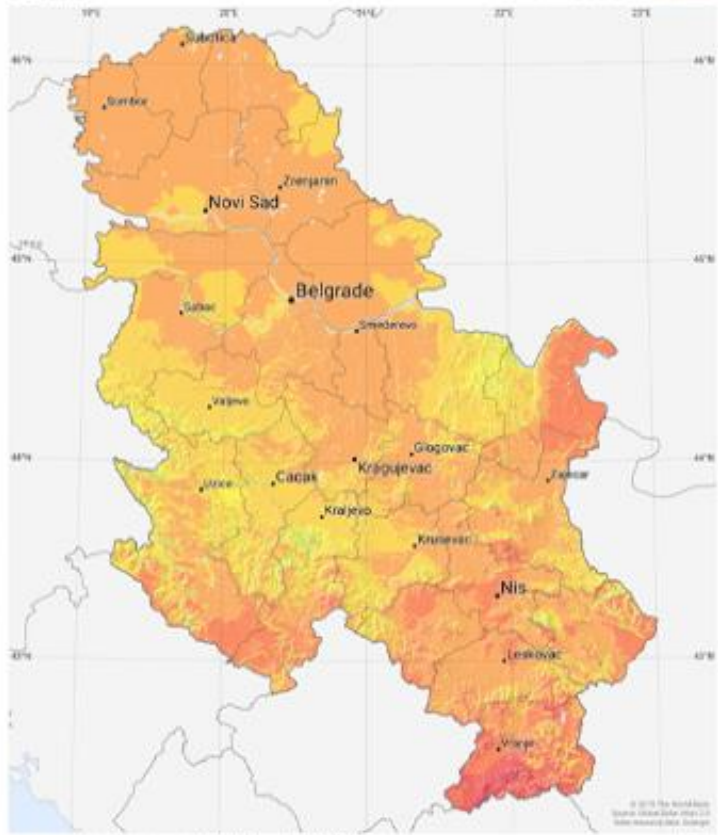
Logo of GIZ (giz) with text "International Cooperation for Sustainable Development" and "GIZ - German Development Cooperation GmbH"

Logo of the Ministry of Energy and Environmental Protection of the Republic of Serbia (MINISTARSTVO ENERGIJE I OKOLIŠA REPUBLIKE SRBIJE) with text "PROMOVISANJE ODRŽIVIH ENERGIJSKIH I OKOLIŠNIH OPREMAVANJE SRBIJE"

# Presentation overview

- ❖ Solar potential of Republic of Serbia
- ❖ Project “Promotion of renewable energy and energy efficiency in Serbia”
- ❖ Solar calculator – assess capacity of solar PV plant





## Solar potential of Republic of Serbia

- Solar potential of the Republic of Serbia – 1200-1400 kWh/kWp annually
- Usage of solar PV potential of Serbia is very low
- Established primary and secondary legislative framework for RES and prosumers
- Necessity of capacity building and awareness raising for increased use of solar energy
- Establishment of data management and certification scheme

# Project “Promotion of renewable energy and energy efficiency in Serbia”

**Commissioned by:** German Federal Ministry for Economic Cooperation and Development (BMZ)

**Country:** Republic of Serbia

**Political Partner:** Ministry of Mining and Energy of Serbia

**Strategic alignment:** Sofia Declaration in the context of the EU Green Deal, NECP, German Development Policies

**Duration:** 01/2022 – 12/2023

**Budget:** 1,5 Mio. Euro



# Current project structure



## Main goal

Improved legal, institutional and technical framework for greater use of sustainable technologies in the energy sector

### Output 1

Improved legal framework for the implementation of the prosumer approach and established data collection and management system

### Output 2

Development of standardized models, i.e. Step-by-step guide "How to become a prosumer", through the implementation of concrete pilot projects

### Output 3

Strengthening and increasing the capacity of all relevant stakeholders for greater use of solar energy through a prosumer approach

# Solar calculator

## Main idea:

- **Assessment of needed solar PV capacity of rooftop installation for:**
  1. **Households**
  2. **Multi apartment buildings**
  3. **Others – private sector etc.**
  
- **Online platform for finding information on:**
  1. **Solar PV installers**
  2. **Financing opportunities**
  
- **Procedures for installation and connection to the grid for:**
  1. **Households**
  2. **Homeowner associations**
  3. **Other prosumers**

Немачка сарадња  
DEUTSCHE ZUSAMMENARBEITUNG

giz Deutsche Gesellschaft für Internationale Zusammenarbeit (GIZ) GmbH

INSTITUT ZA PROMETNU IZUMIŠTU I INOVACIJU (IPRI)

Kalkulator

## Solarni sistemi:

### Sve na jednom mestu

Uz nekoliko lako dostupnih informacija izračunajte kapacitet solarnog sistema za vaše potrebe. Saznajte više o pravnim okvirima za priključenje sistema, mogućim izvođačima radova i opcijama za finansiranje.

Solarni Kalkulator

Pokreni Kalkulator



Implemented by:

**giz** Deutsche Gesellschaft  
für Internationale  
Zusammenarbeit (GIZ) GmbH



# Thank you for your attention!

**Aleksandar Popović**  
Project manager

Promotion of renewable energy and energy efficiency in Serbia  
Prosumer approach – Pilot projects and models

**Deutsche Gesellschaft für Internationale Zusammenarbeit (GIZ) GmbH**

Terazije 23, 11000 Belgrade, Republic of Serbia

T: +381 11 400 3890 ext. 5008

M: +381 63 271 537

E: [aleksandar.popovic@giz.de](mailto:aleksandar.popovic@giz.de)

I: [www.giz.de](http://www.giz.de)

**Deutsche Gesellschaft für  
Internationale Zusammenarbeit (GIZ) GmbH**

Registered offices  
Bonn and Eschborn

Friedrich-Ebert-Allee 36 + 40  
53113 Bonn, Germany  
T +49 228 44 60 - 0  
F +49 228 44 60 - 17 66

Dag-Hammarskjöld-Weg 1 - 5  
65760 Eschborn, Germany  
T +49 61 96 79 - 0  
F +49 61 96 79 - 11 15

E [info@giz.de](mailto:info@giz.de)  
I [www.giz.de](http://www.giz.de)