

The Outcomes of the South East Europe Regional Consultations on Renewable Energy

Gurbuz Gonul – Senior Programme Officer, Regions

Renewable Energy Coordination Group

10 November 2016, Vienna, Austria

SEE Regional Consultation Meeting

Bucharest, 6-7 October 2016

- ❑ Co-organized by IRENA and the Ministry of Energy of Romania
- ❑ Participation: governments, TSOs, energy regulators, key regional stakeholders
- ❑ Discussion on:
 - findings of the Cost-Effective RE Resource Potential study
 - findings of the Regional Gap Analysis study
 - the needs and priorities in the development of the RE sector
 - IRENA's potential role in supporting RE uptake in the region

Energy Community:

Albania, Bosnia and Herzegovina, FYR of Macedonia, Kosovo, Moldova, Montenegro, Serbia

European Union:

Bulgaria, Croatia, Romania, Slovenia

- Energy Charter
- Energy Regulators Regional Association
- Council of European Energy Regulators
- EBRD
- GIZ
- KfW

Objective: Identification of the priority areas for action:

- Complementary to the existing / planned efforts in the region
- Adding most value to the region in supporting renewables development

Capacity building needs
depend on RE
experience
(2 groups of countries)

Capacity building needs
are multifaceted &
differentiated by
country

Additional needs will
emerge in the short to
medium term

Group 1 -Countries, which implemented & revised their RE schemes, achieved their RED targets & have developed RE market

Group 2 -Countries, which have recently approved support schemes & RE markets are at early stages

- ✓ Informed policy making
- ✓ Data & analysis
- ✓ Finance
- ✓ RE projects & markets
- ✓ Understanding RE costs
- ✓ Making RE projects work

Better awareness - More institutions will be exposed/involved in RE markets

Changes due to Renewable Energy Directive II

Technologies advancing & infrastructure upgrades (e.g. smart grids)

Challenges and potential areas of required support

Perspective of the governments

- **Designing of adequate RE support schemes (more market based, in line with the EU requirements)**
- **Elaboration of RE supportive frameworks in the horizon up to 2030 (including revision of the NREAPs)**
- **Insufficient expertise on biomass statistics**
- **Integration of renewables with the energy market**
- **Limited administrative capacities**
- **Adverse social consequences of renewables (impact on electricity bills)**

Perspective of the development partners

- **Coordination of a region-wide support, in a close collaboration with the Energy Community and national partners to avoid duplication of work on the ground**
- **Dissemination of up-to-date information/knowledge/best practices**
- **Raising awareness of the benefits of renewables**
- **Providing capacity building support, incl. for local governments**
- **Support countries in preparation of RE frameworks for the perspective up to 2030**

Mapping the RE support in SEE

Regional legislative harmonization

- Energy Community, European Commission

Policy & regulatory assistance

- Energy Community, GIZ, USAid, EBRD, IFC, European Commission

Technical support

- EBRD, ADA, KfW, UNDP, European Commission

R&D

- CEI, European Commission

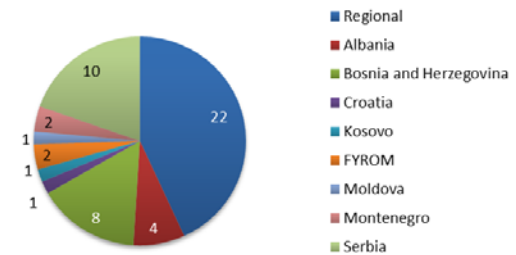
Investment facilities

- WBIF, GfG

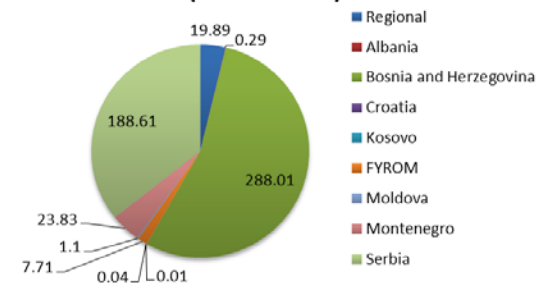


Technical assistance – RE projects

Number of projects by country coverage



Budget by country coverage (Million USD)



Enabling frameworks: Policy, technical and finance



Renewables Readiness Assessment

(RRA) identifies short to medium term actions to overcome the barriers to RE deployment.

- ✓ Inclusive multi-stakeholder process
- ✓ Led and owned by the government
- ✓ Facilitated by IRENA

Post-RRA Support:

- ✓ Technical Assistance
- ✓ Advisory
- ✓ Capacity Building



Project development tools



Access to financing and risk mitigation instruments



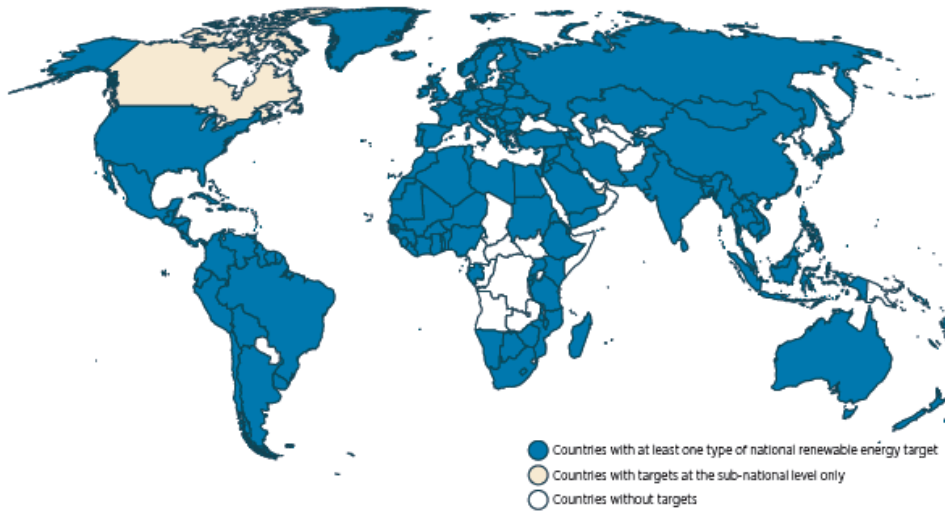
Concessional loans

Grid Integration Study:

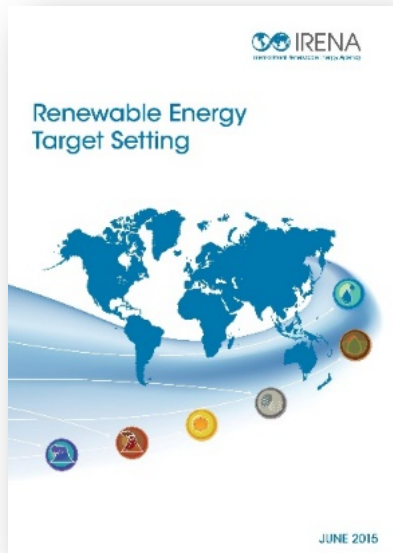
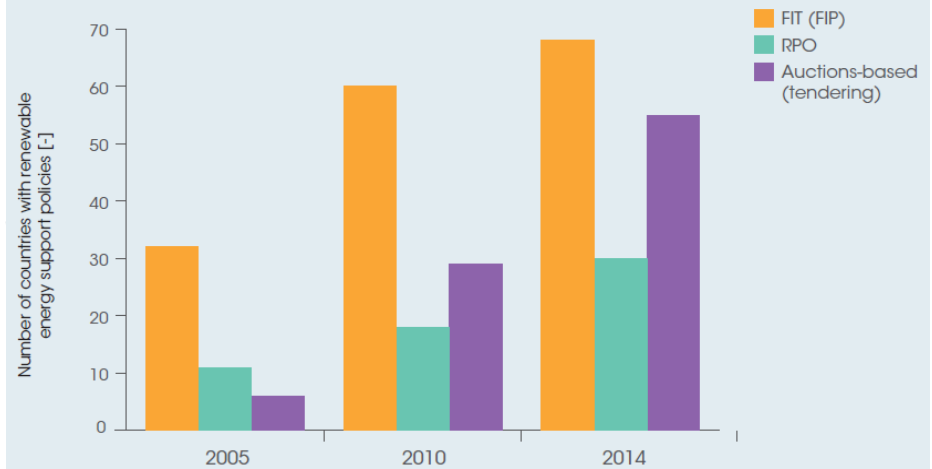
- How much VRE can be integrated without major system upgrades?
- Is it feasible to achieve the target shares of VRE?
- What is required to achieve the target shares of VRE?

Until now focus on small islands but moving towards larger interconnected systems

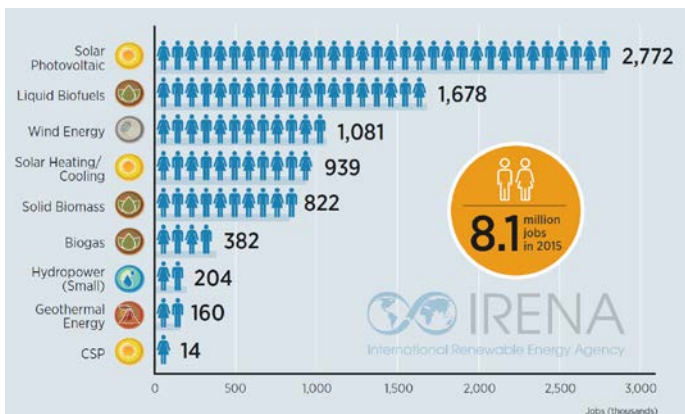
RE targets setting and support schemes



Number of countries with renewable energy policies, by type

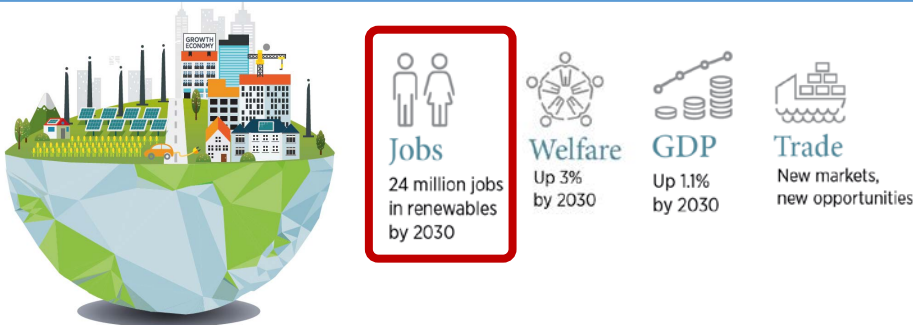


Socio-economic benefits



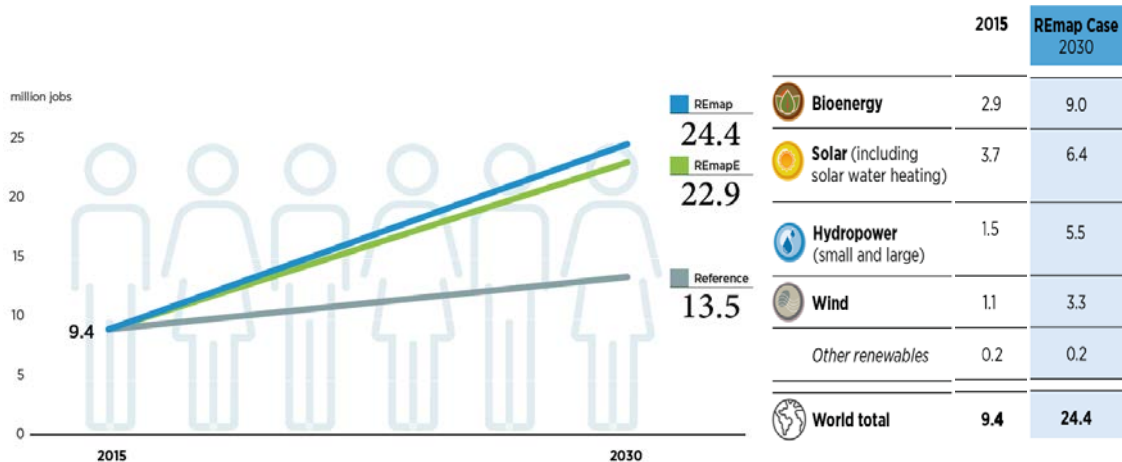
Source: IRENA (2016), Renewable Energy and Jobs - Annual Review 2016

Doubling the share of renewables in the global energy mix by 2030 would increase GDP, social welfare and employment worldwide.



Source: IRENA (2016), Renewable Energy Benefits: Measuring The Economics.

- South East Europe needs:**
- ✓ to ensure an energy transition in an affordable manner
 - ✓ to maintain a diversified energy mix to ensure energy security
 - ✓ to create RE-related jobs
 - ✓ to collaborate closer with IRENA on better understanding of the socio-economic benefits



Source: IRENA (2016), Renewable Energy Benefits: Measuring The Economics.

High-Level Meeting on Renewable Energy in South East Europe

Abu Dhabi, 13 January 2017

- ❑ Development and agreement on a customized Action Plan for IRENA's engagement with South East Europe
- ❑ Participation: high-level representatives of the governments of South East Europe and partner countries, key regional stakeholders, incl. international organizations and development partners



Strategic Partnerships with Key Stakeholders

Create synergies, maximize complementarities, avoid overlaps

Thank you

Gurbuz Gonul
Senior Programme Officer – Regions
GGonul@irena.org



www.irena.org



www.twitter.com/irena



www.facebook.com/irena.org